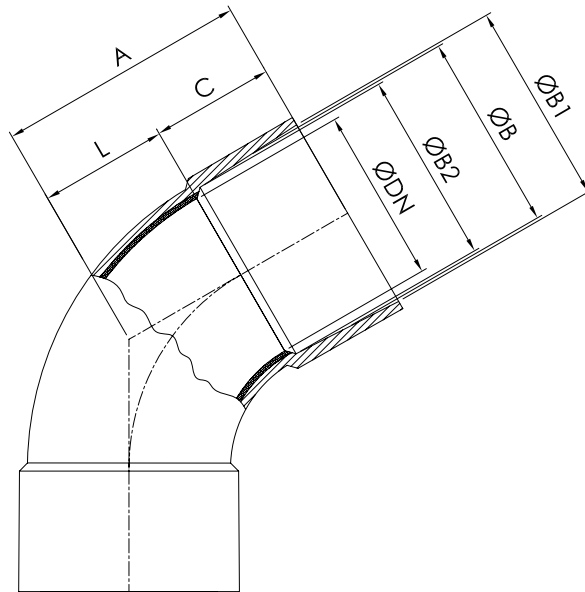


60° ELBOW

EPI-DUR / VIN-DUR / ISO-DUR Adhesive Bonded Type

Design:
PN 16 DN 25-40-50-65-80-100-150-200-250-300
PN 10 DN 350-400-500



DN	B (mm)	B2 (mm)	B1 (mm)	L (mm)	C (mm)	A (mm)	Weight (kg)
25	33.4	32.9	33.9	19	36	55	0.196
40	48.0	47.5	48.5	31	36	67	0.300
50	60.0	59.5	60.5	39	42	81	0.450
65	73.5	73	74	46	50	96	0.535
80	89.0	88.5	89.5	56	59	115	1.000
100	114.0	113.5	114.5	76	73	149	1.650
125	134.5	134	135	110	89	199	2.240
150	168.0	167.5	168.5	124	91	215	3.400
200	211	210.5	211.5	173	94	267	5.500
250	260	259.5	260.5	198	109	307	7.400
300	311.5	311	312	260	110	370	10.500
350	363.0	362.5	363.5	288	104	392	13.900
400	413.0	412.5	413.5	338	106	444	17.800
500	523.5	523	524	346	150	496	23.800